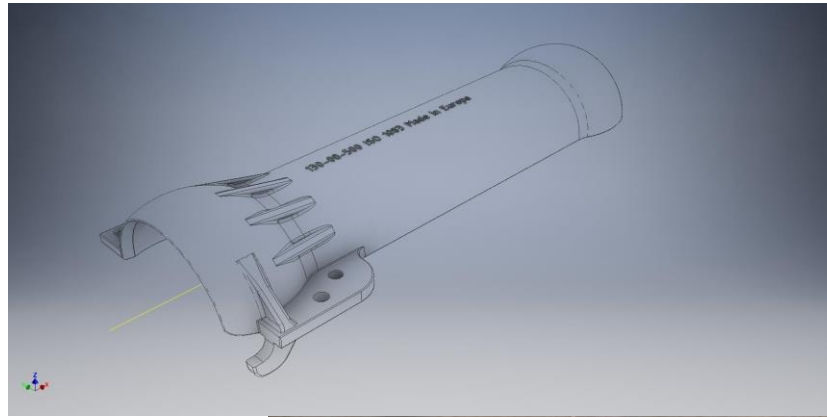


# Nautilus Pipe

## Subsea Cable Protection & Ballast System

### NP-225-09-500 (concept) Technical Specification



#### General information

Nautilus Pipe has been developed in line with industry requirements for cable protection. The Nautilus Pipe cable protection and ballast system can be used to protect cables from external impact, (over) bending, avoiding instability on the seabed and can be installed in any water-depth.

The design of Nautilus Pipes ensures ease of mounting directly from the installation vessel or by divers on the seabed. Due to the unisex design of the pipes, no attention needs to be given to have the right shell at the right location; Nautilus Pipes are all identical due to stringent QA/QC-procedures during production.

The Nautilus Pipes can be bolted together, however the unique 'twist-n-lock' design ensures that even without bolting, the mounted Nautilus Pipe remains in place. The bolting requirement needs to be assessed on a project basis, to arrive at the right Client-solution.

The Nautilus Pipe comes in standard sizes but the design can be modified to meet Client specific requirements.

<b>Segment length - overall</b>	: 575 mm
<b>Segment length - effective</b>	: 500 mm
<b>Min. diameter (internal)</b>	: 225 mm (cable diameter 145 -200 mm)
<b>Max. diameter (external)</b>	: 285 mm
<b>Max. dimension (external)</b>	: 350 mm
<b>Min. wall thickness</b>	: 9 mm

<b>Material</b>	: Ductile Iron to ISO 1083
<b>Tensile strength / elongation</b>	: 400 mPa / 15%
<b>Impact resistance</b>	: > 5 kJ
<b>Corrosion resistance (seawater)</b>	: excellent
<b>Typical material loss</b>	: < 0.1mm/yr

<b>Weight per segment</b>	: 22,4 kg
<b>Weight per meter (air)</b>	: 89,6 kg
<b>Weight per meter (subsea)</b>	: 80,6 kg
<b>Min radius (centre)</b>	: 3,0 m